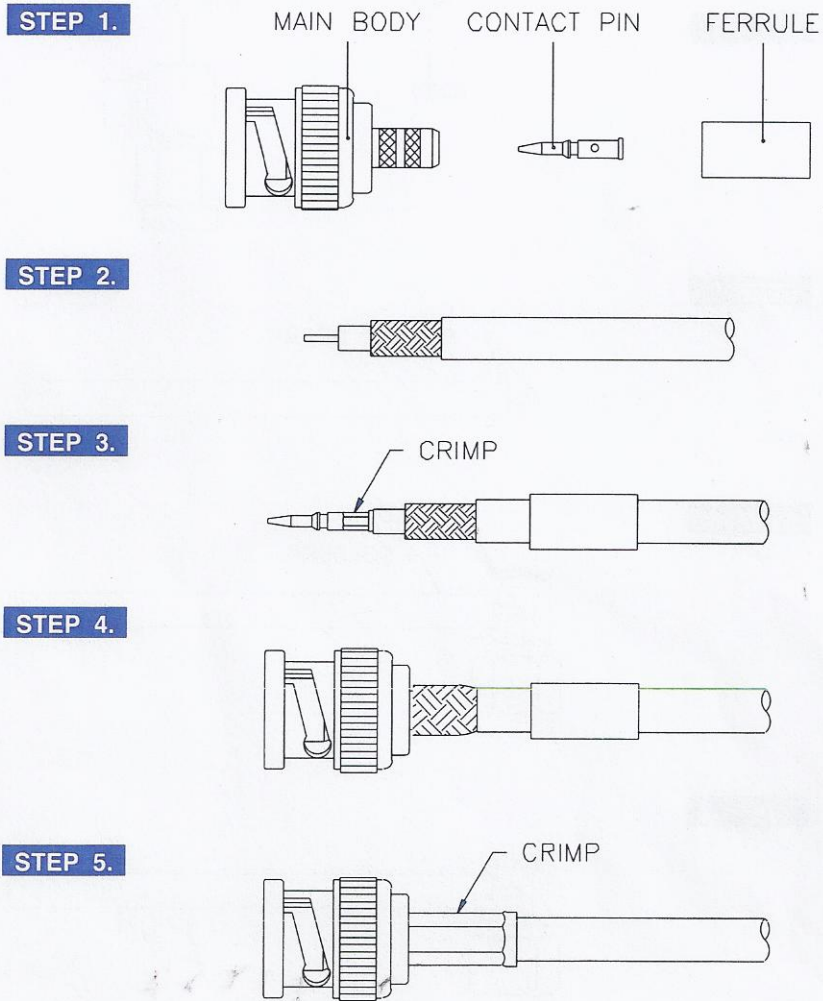


Cable Assembly Instructions-Crimp / Crimp **E**



- STEP 1. All parts of the connector are shown. A crimp tool is necessary to complete the termination.
- STEP 2. Strip the cable inner conductor, dielectric, braid, and jacket as per "RECOMMENDED CABLE STRIPPING DIM'S" in catalog.
- STEP 3. Insert inner conductor into the CONTACT PIN and crimp it with the crimp tool as shown. Then slide the FERRULE onto cable.
- STEP 4. Insert the MAIN BODY into braid and dielectric.
- STEP 5. Slide the FERRULE over braid and crimp it with the crimp tool as shown.