



PRO-ISO-PHY-TETRA-4

Four-TETRA-Station Combiner

- The PRO-ISO-PHY-TETRA-4 combiner provides the possibility of connecting up to four TETRA radios into one common antenna.
- The PRO-ISO-PHY-TETRA-4 models are available in the frequency range 380 - 420 MHz.

DESCRIPTION

- ETSI compliant connection of four digital radios.
- The PRO-ISO-PHY-TETRA-4 is the successor to the PRO-MIX-PHY-TETRA-N-4RXI.
- The PRO-ISO-PHY-TETRA-4 has improved isolation between the ports - more than 60 dB - and lower insertion loss.
- The use of high-quality system components such as highly selective helical duplex filters and high-performance isolators provides high isolation and secure communication.
- The smallest and most compact design on the market.
- Suitable for both stationary and mobile use.
- Also available in tray for 19" rack mounting.
- Vibration and shock tested in accordance with EN-60068**.

**Tested in accordance with:

Random test: EN 60068-2-64, test specification: EN 300 019-2-5 V3.0.0.

Shock test: EN 60068-2-27, test specification: EN 300 019-2-5 V3.0.0.

Bump test: EN 60068-2-29, test specification: EN 300 019-2-5 V3.0.0.

ORDERING DESIGNATIONS

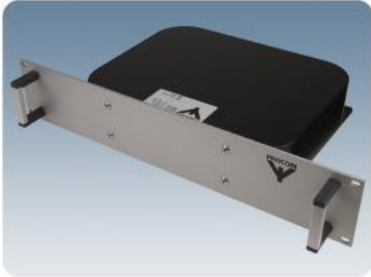
TYPE	TX MHz	RX MHz	PRODUCT NO.
PRO-ISO-PHY-385/390-4-N(f)	380 - 385	390 - 395	210001945
PRO-ISO-PHY-385/390-4-TR-F-N(f)	380 - 385	390 - 395	210002008
PRO-ISO-PHY-385/390-4-TR-B-N(f)	380 - 385	390 - 395	210002009
PRO-ISO-PHY-415/420-4-N(f)	410 - 415	420 - 425	210002035
PRO-ISO-PHY-415/420-4-TR-F-N(f)	410 - 415	420 - 425	210002091
PRO-ISO-PHY-415/420-4-TR-B-N(f)	410 - 415	420 - 425	210002092
ACCESSORIES			
19" Front plate with connectors in front			210002005
19" Front plate with connectors in back			210002006

PRO-ISO-PHY-TETRA-4-TR-F-N(f)





PRO-ISO-PHY-TETRA-4-TR-B-N(f)



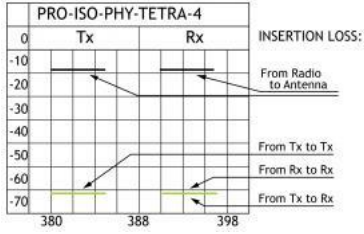
SPECIFICATIONS

ELECTRICAL	
MODEL	PRO-ISO-PHY-TETRA-4
TYPE	TETRA combiner
TX/RX FREQUENCY	TX: 380 - 385 MHz RX: 390 - 395 MHz or TX: 410 - 415 MHz RX: 420 - 425 MHz
INSERTION LOSS TX-ANT.	< 9.7 Typ. 8.5 to 9.5 dB
INSERTION LOSS RX-ANT.	< 9.7 Typ. 8.5 to 9.5 dB
ISOLATION TRX → TRX	TX - TX: > 60 dB (380 - 385 MHz & 410 - 415 MHz) RX - RX: > 60 dB (390 - 395 MHz & 420 - 425 MHz) TX - RX / RX - TX: > 60 dB
SWR	< 1.5
MAX. POWER	25 W/station
GROUP DELAY VARIATION	TX-ANT. < 120 nsec. RX-ANT. < 150 nsec.
MECHANICAL	
CONNECTOR TYPE	N-female
COLOUR	Black
DIMENSIONS (L x W x H)	300 (excl. conn.) x 240 x 65 mm / 11.81 (excl. conn.) x 9.45 x 2.56 in.
WEIGHT	Approx. 6300 g / 13.89 lb.

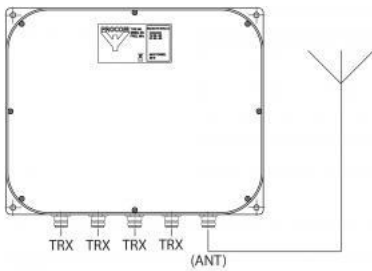


ENVIRONMENTAL	
IP-GRADE	IP-62

TYPICAL ATTENUATION VALUES



CONNECTION DIAGRAM



MOUNTING DETAILS

